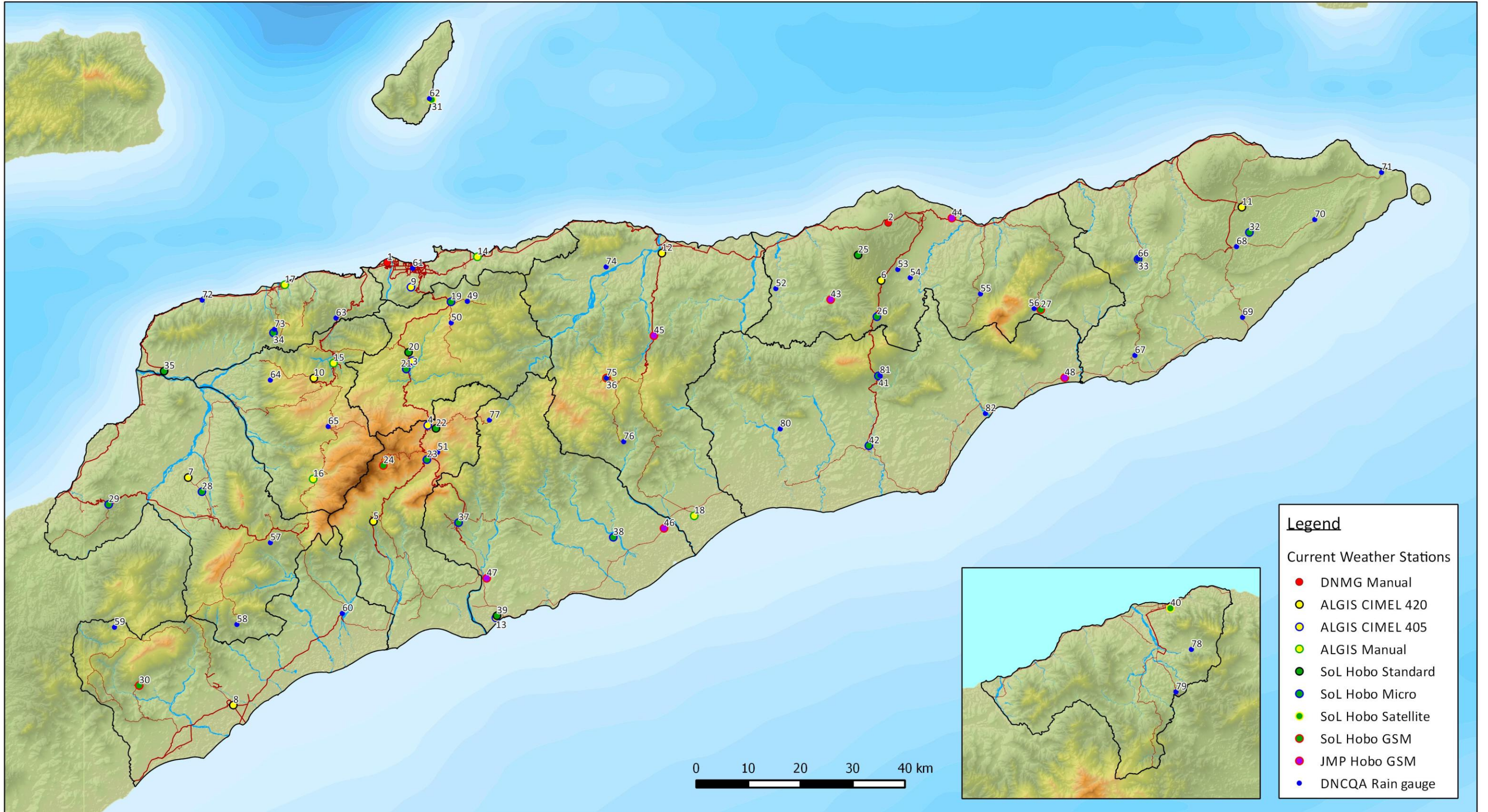


# Current Weather Stations in Timor-Leste



<b>DNMG</b>	7 Maliana	16 Atsabe	24 Hatobuilico	33 Luro	42 Viqueque	<b>DNCQA</b>	57 Bobonaro	66 Luro	75 Laclubar
1 Dili Airport	8 Suai	17 Liquica	25 Darasula	34 Fazenda Algarve		49 Remexio	58 Lolotoe	67 Iliomar	76 Soibada
2 Baucau Airport	9 Dare	18 Natarbora	26 Venilale	35 Loes	<b>JMP</b>	50 Liquidoe	59 Baer	68 Los Palos	77 Turisca
	10 Ermera	<b>SoL</b>	27 Bagaia	36 Laklubar	43 Vemase	51 Flexa	60 Zumalai	69 Lore	78 Noe-Heno
<b>ALGIS</b>	11 Fuiloro	19 Acumau	28 Ritabou	37 Same	44 Seical	52 Waigae	61 Dili EDTL	70 Moshes	79 Oesilo
3 Aileu	12 Manatuto	20 Quintal Portugal	29 Balibo	38 Dotik	45 Cribas	53 Darasula	62 Atauro	71 Tutuala	80 Lacluta
4 Maubisse	13 Betano	21 Selo Malere	30 Fohorem	39 Betano	46 Sahen	54 Gariuai	63 Railaco	72 Maubara	81 Ossu
5 Ainaro	14 Hera	22 Urulefa	31 Maumeta	40 Pante Macassar	47 Caraulun	55 Quelicai	64 Fatubessi	73 Fasenda	82 Bebui
6 Fatumaca	15 Gleno	23 Aituto	32 Fuiloro	41 Ossu	48 Irabere	56 Bagaia	65 Lete Foho	74 Lacló	

Weather station location data supplied by National Directorate of Meteorology and Geophysics (DNMG), ALGIS-Agromet (MAF), National Directorate of Water Quality and Control (DNCQA), Seeds of Life (MAF) and Japanese Master Plan project (JMP, MAF). Some validation of locations has been made. Exact locations of DNCQA rain gauges remains uncertain.  
Produced by: S Bacon, Seeds of Life, 10/12/2014





## Table of Current Weather Stations

10/12/2014

A list of latitude, longitude and elevation values are provided for each weather station and rain gauge. All CIMEL and Hobo type weather stations are automatic weather stations. GSM and Satellite refers to the ability to transmit data to the internet with daily updates. Data may be requested by contacting the relevant departments or, for SoL data, go to the website: [www.seedsoflifetimor.org](http://www.seedsoflifetimor.org)

ID	Latitude	Longitude	Elevation	Location	District	Operator	Type
1	-8.54808	125.52766	11	Dili Airport	Dili	DNMG	Manual
2	-8.47895	126.39900	525	Baucau Airport	Baucau	DNMG	Manual
3	-8.71917	125.57167	900	Aileu	Aileu	ALGIS	CIMEL 405
4	-8.83170	125.59810	1500	Maubisse	Ainaro	ALGIS	CIMEL 405
5	-8.99889	125.50361	812	Ainaro	Ainaro	ALGIS	CIMEL 420
6	-8.57940	126.38661	612	Fatumaca	Baucau	ALGIS	CIMEL 420
7	-8.92250	125.18140	135	Maliana	Bobonaro	ALGIS	CIMEL 420
8	-9.31860	125.26000	22	Suai	Covalima	ALGIS	CIMEL 420
9	-8.59110	125.56890	460	Dare	Dili	ALGIS	CIMEL 405
10	-8.74940	125.40000	1165	Ermera	Ermera	ALGIS	CIMEL 420
11	-8.45190	127.01400	375	Fuiloro	Lautem	ALGIS	CIMEL 420
12	-8.53190	126.00530	25	Manatuto	Manatuto	ALGIS	CIMEL 420
13	-9.16660	125.71660	30	Betano	Manufahi	ALGIS	CIMEL 405
14	-8.53836	125.68453	982	Hera	Dili	ALGIS	Manual
15	-8.72340	125.43432	982	Gleno	Emera	ALGIS	Manual
16	-8.92495	125.39885	1165	Atsabe	Emera	ALGIS	Manual
17	-8.58697	125.34950	52	Liquica	Liquica	ALGIS	Manual
18	-8.98912	126.06158	69	Natarbora	Manatuto	ALGIS	Manual
19	-8.61661	125.63850	975	Acumau	Aileu	SoL	Hobo Micro
20	-8.70451	125.56480	980	Quintal Portugal	Aileu	SoL	Hobo Standard
21	-8.73364	125.56070	925	Seloi Malere	Aileu	SoL	Hobo Micro
22	-8.83692	125.61240	1316	Urulefa	Ainaro	SoL	Hobo Standard
23	-8.89135	125.59658	1667	Aituto	Ainaro	SoL	Hobo Micro
24	-8.90146	125.52087	2203	Hatobuilico	Ainaro	SoL	Hobo GSM
25	-8.53510	126.34650	690	Darasula	Baucau	SoL	Hobo Standard
26	-8.64255	126.37929	836	Venilale	Baucau	SoL	Hobo Micro
27	-8.63033	126.66427	309	Baguia	Baucau	SoL	Hobo GSM
28	-8.94717	125.20537	163	Ritabou	Bobonaro	SoL	Hobo Micro
29	-8.96925	125.04325	551	Balibo	Bobonaro	SoL	Hobo Micro
30	-9.28451	125.09632	688	Fohorem	Covalima	SoL	Hobo GSM
31	-8.26482	125.60496	6	Maumeta	Dili	SoL	Hobo Satellite
32	-8.49582	127.02705	358	Fuiloro	Lautem	SoL	Hobo Micro
33	-8.54236	126.83355	409	Luro	Lautem	SoL	Hobo Micro
34	-8.67051	125.32979	919	Fazenda Algarve	Liquica	SoL	Hobo Micro
35	-8.73720	125.13956	22	Loes	Liquica	SoL	Hobo Standard
36	-8.74928	125.90888	1005	Laklubar	Manatuto	SoL	Hobo GSM
37	-9.00091	125.65174	550	Same	Manufahi	SoL	Hobo Micro
38	-9.02642	125.92083	101	Dotik	Manufahi	SoL	Hobo Micro
39	-9.16303	125.71850	9	Betano	Manufahi	SoL	Hobo Standard
40	-9.20623	124.37433	29	Pante Macassar	Oecussi	SoL	Hobo Satellite
41	-8.74562	126.38180	648	Ossu	Viqueque	SoL	Hobo Micro
42	-8.86711	126.36533	51	Viqueque	Viqueque	SoL	Hobo Micro
43	-8.61269	126.29880	88	Vemase	Baucau	JMP	Hobo GSM
44	-8.47092	126.50960	10	Seical	Baucau	JMP	Hobo GSM
45	-8.67554	125.99143	135	Cribas	Manatuto	JMP	Hobo GSM
46	-9.01090	126.00900	21	Sahen	Manufahi	JMP	Hobo GSM
47	-9.09777	125.70060	32	Caraulun	Manufahi	JMP	Hobo GSM
48	-8.74878	126.70591	6	Irabere	Viqueque	JMP	Hobo GSM
49	-8.61583	125.66694	874	Remexio	Aileu	DNCQA	Rain gauge
50	-8.65314	125.63892	1243	Liquidoe	Aileu	DNCQA	Rain gauge
51	-8.87833	125.61528	2015	Flexa	Ainaro	DNCQA	Rain gauge
52	-8.59356	126.20353	82	Waigae	Baucau	DNCQA	Rain gauge
53	-8.56028	126.41556	490	Darasula	Baucau	DNCQA	Rain gauge
54	-8.57472	126.43722	262	Gariuai	Baucau	DNCQA	Rain gauge
55	-8.60278	126.55944	635	Quelicai	Baucau	DNCQA	Rain gauge
56	-8.62833	126.65278	461	Baguia	Baucau	DNCQA	Rain gauge
57	-9.03583	125.32444	794	Bobonaro	Bobonaro	DNCQA	Rain gauge
58	-9.17813	125.26616	850	Lolotoe	Bobonaro	DNCQA	Rain gauge
59	-9.18298	125.05334	208	Baer	Covalima	DNCQA	Rain gauge
60	-9.15899	125.44964	90	Zumalai	Covalima	DNCQA	Rain gauge
61	-8.55833	125.57194	15	Dili EDTL	Dili	DNCQA	Rain gauge
62	-8.26305	125.60107	10	Atauro	Dili	DNCQA	Rain gauge
63	-8.64487	125.43849	777	Railaco	Ermera	DNCQA	Rain gauge
64	-8.75288	125.32426	1087	Fatubessi	Ermera	DNCQA	Rain gauge
65	-8.83361	125.42500	1045	Lete Foho	Ermera	DNCQA	Rain gauge
66	-8.54178	126.83332	403	Luro	Lautem	DNCQA	Rain gauge
67	-8.70990	126.82800	388	Iliomar	Lautem	DNCQA	Rain gauge
68	-8.52056	127.00472	375	Los Palos	Lautem	DNCQA	Rain gauge
69	-8.64368	127.01516	66	Lore	Lautem	DNCQA	Rain gauge
70	-8.47343	127.14074	353	Moshes	Lautem	DNCQA	Rain gauge
71	-8.39139	127.25694	355	Tutuala	Lautem	DNCQA	Rain gauge
72	-8.61361	125.20583	32	Maubara	Liquica	DNCQA	Rain gauge
73	-8.66448	125.33163	1019	Fazenda	Liquica	DNCQA	Rain gauge
74	-8.55583	125.90833	175	Laclo	Manatuto	DNCQA	Rain gauge
75	-8.74917	125.90889	1100	Laclubar	Manatuto	DNCQA	Rain gauge
76	-8.86000	125.93889	680	Soibada	Manatuto	DNCQA	Rain gauge
77	-8.82250	125.70528	1179	Turiscari	Manufahi	DNCQA	Rain gauge
78	-9.27801	124.41099	177	Noe-Heno	Oecussi	DNCQA	Rain gauge
79	-9.35212	124.38418	474	Oesilo	Oecussi	DNCQA	Rain gauge
80	-8.83778	126.21111	108	Lacluta	Viqueque	DNCQA	Rain gauge
81	-8.74472	126.38444	660	Ossu	Viqueque	DNCQA	Rain gauge
82	-8.81100	126.56800	6	Bebui	Viqueque	DNCQA	Rain gauge

